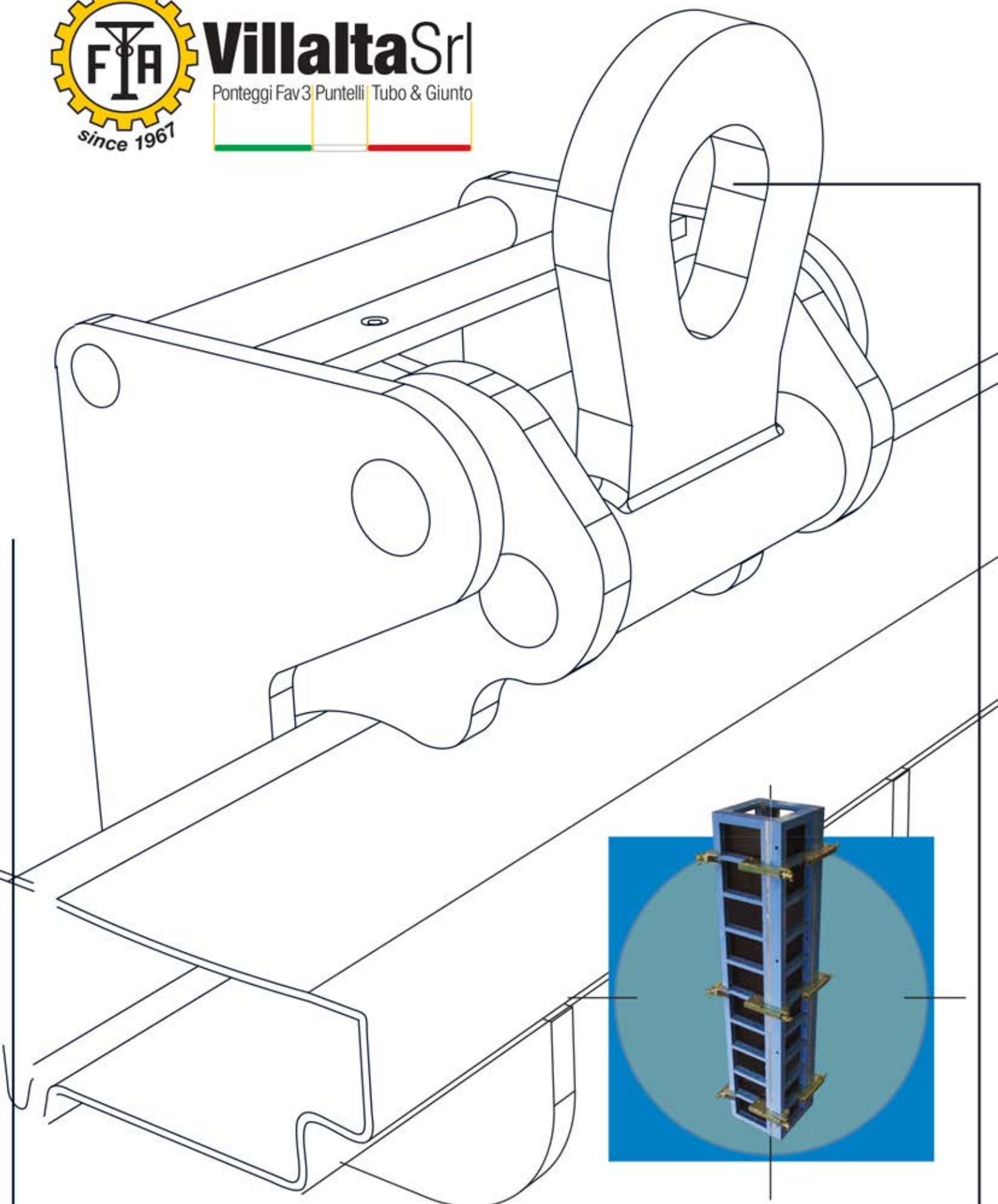


PRODUCTION AND SELLING OF FORMWORKS FOR THE BUILDING INDUSTRY



VillaltaSrl

Ponteggi Fav3 Puntelli Tubo & Giunto



● INNOVATIVE TECHNOLOGY FOR THE BUILDING INDUSTRY ●

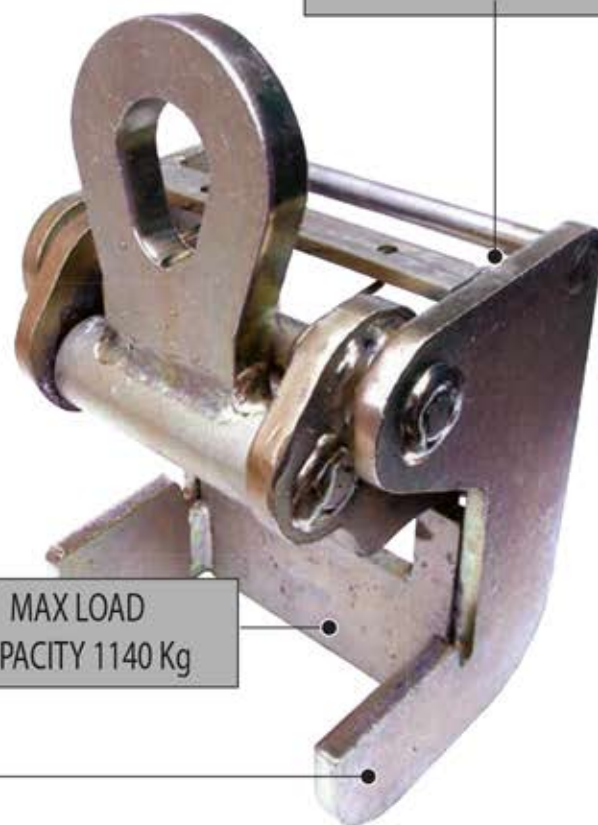
LIFTING HOOK

IN COMPLIANCE WITH EC EQUIPMENT DIRECTIVE 98/37



The lifting hook is aimed at handling formworks for the building industry. Designed with a pliers-like functioning, thanks to the special levers' device which increases the grip's strength as the load grows, it ensures a firm grip of the profile.

NEW!



MAX LOAD
CAPACITY 1140 Kg

VILLALTA'S FORMWORKS

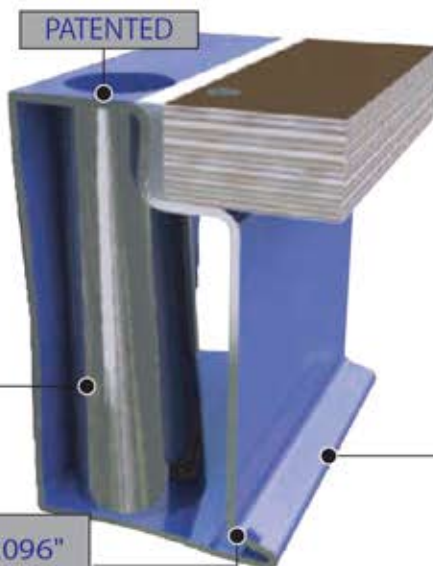
After several tests and trials by our technicians, we succeeded in providing our formworks with a loading capacity of 7500 Kg throughout the entire wet surface, in compliance with DIN protocols, thus enabling the final user to save an outstanding amount of time during the installation.



7500Kg/m²

NEWS ABOUT FORMWORK

Thanks to the special patented profile we have eliminated any kind of processing on the wooden multi-layer, which implied extra drilling to allow the diw rod to go through.

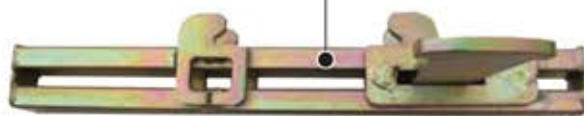


STEEL PROFILE "T2096"
UNI EN 10025-S275JO

With this kind of innovation, the passage of the bar takes place only on the inside of the profile, thus allowing a longer duration to the multi-layer, which does not have critical points for water absorption anymore. Moreover, it is characterized by an indispensable protruding edge on the lower part, which enables our aligner clamp to assemble formworks in a linear and precise way.

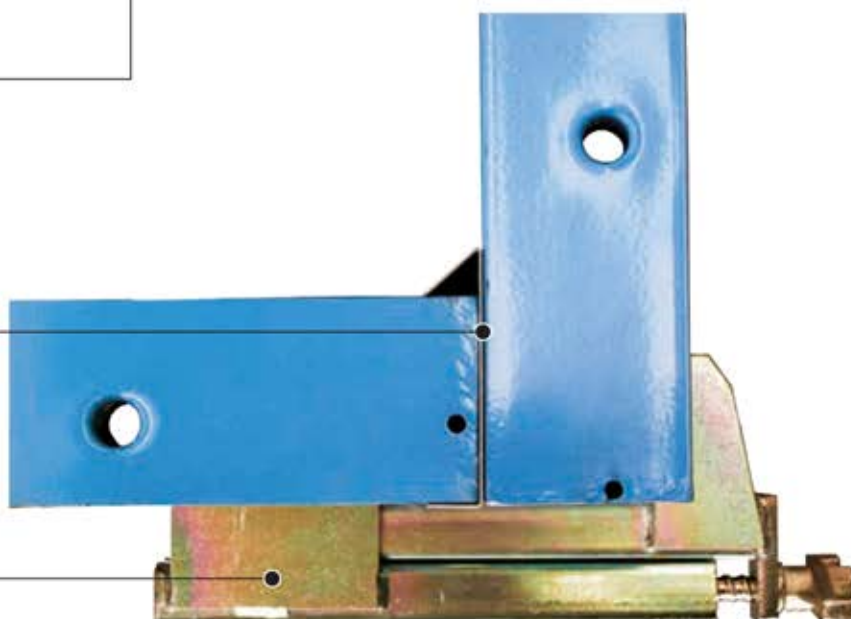
ALIGNER CLAMP

Our special ALLIGNER CLAMP allows the assembling of "VILLALTA" formworks both in vertical and in horizontal position thus enabling, thanks to the special profile form and to the clamp's blocking system, a precise and perfect formwork alignment and avoiding the use of aligner pipes.



SHEET GALVANIZED EDGE PROTECTOR

This accessory allows blunting on any angle of the masonry. It must be inserted between the two formworks which will be then blocked with an external angle clamp.



SPECIAL PILLAR FORMWORK 3000X1000



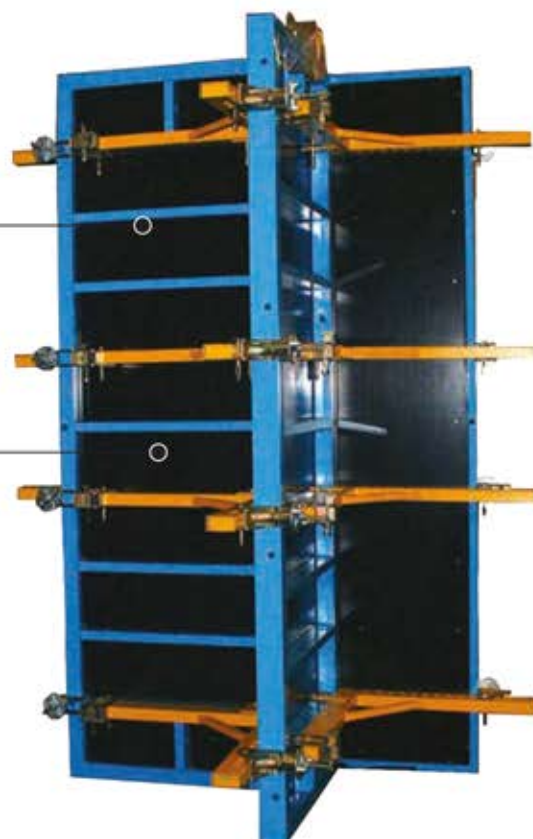
Unlike a standard panel, thanks to the holes in the multilayer in correspondence with the special holes already created in the metal frame it is possible, when assembling with the special pillar clamp, to build up pillars with variable dimensions, from 20x20 cm to 80x80 cm.



PILLAR WITH CORNER PLATES

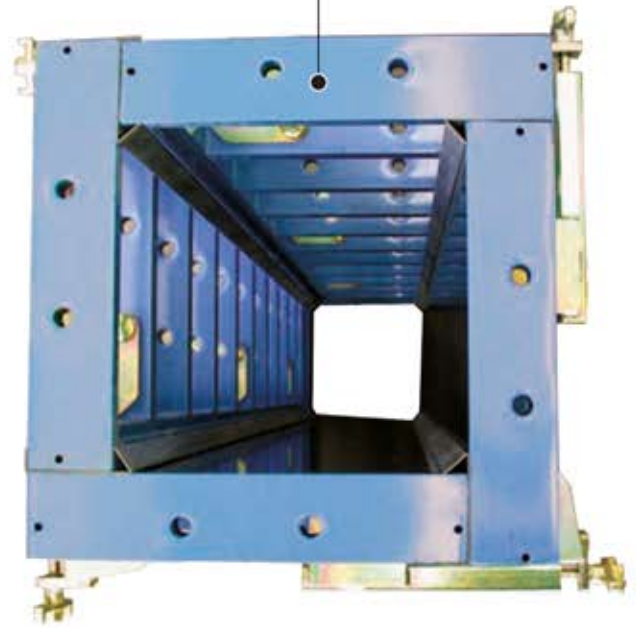


It enables to build up formwork frames for pillars with dimensions ranging from 5 cm with a minimum of 20 cm to a maximum of 80x80 cm, by using standard formworks 3000x1000, assembled by means of pillar corner plates, pillar brackets and alignment brackets.



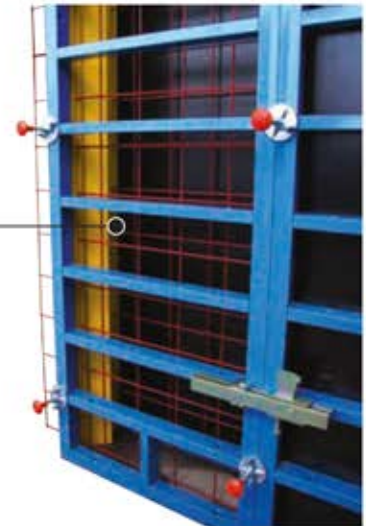
COLUMN WITH SIZE PANELS

With this system, it is possible to build up formworks for columns with fixed dimensions, by using formworks with necessary dimensions, assembled with external angle clamps.



BLINDING WITH PASSING OF ELECTRICALLY WELDED WIRE -NETTING

This accessory allows the closing of a masonry which features a pilot cut for the cold joint. Moreover, thanks to the special openings, it allows the passing of the electrically-welded wire-netting.



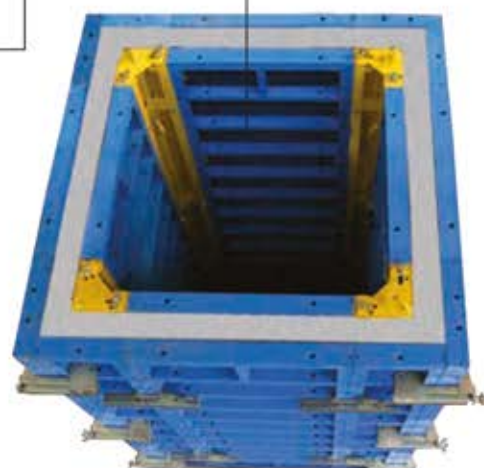
Passing of the wire-netting through the blinding



BICONICAL BLOCK FOR LIFT SHAFT



It allows to create lift shafts, underground vanes and pits, by removing the whole mould at the time of dismantling.



OUTER AND INNER PLINTH



In order to manufacture an external plinth, VILLALTA has created a fast system by foreseeing the use of formworks of any dimension crossed into one another and assembled by means of plinth clamps. Otherwise, for the inner plinth, conic ones are used in order to facilitate complete dismantling. These can be assembled by means of special brackets applied to our frameworks or, as an alternative, to classical yellow wood panels.



CONTAINER FOR FORMWORK CARRIAGE



This very useful device, made up of 4 steel uprights and equipped with a lifting hook, allows a safe and stable carriage of formworks, avoiding unpleasant inconveniences to your equipment.



SERVICING CONSOLE RAILING COLUMN AND RAILING

These accessories, assembled together, ensure a better security in your building yard during customary operations around formworks.

RAILING

LATERAL CLOSING COLUMN

SERVICING CONSOLE





VILLALTA SRL
VIA VITTORIO ALFIERI 43, 35010 GAZZO (PD) - ITALY
TEL.: +39 049 9425577; FAX: +39 049 9425707
e-mail: info@villaltasrl.it; www.villaltasrl.it